



SPECIAL ELECTRICAL SYSTEMS  
SPOTLIGHT ON SANCTUARY



powerful **TECHNOLOGY**

---

John Hall Electric is proud to have partnered on this luxury multifamily project on the sandy shores of Virginia Beach. A design build project, our team worked with Clancy & Theys to exceed client expectations in terms of **power reliability, security, and lifestyle amenities.**

In addition to the lighting and general electrical service work, our team installed **state-of-the-art technologies and systems**, including door access controls, surveillance, networked security and fire, emergency power generation, CCTV, Audio-visual and LCD monitors in the common areas, WiFi, and a sophisticated music network.

# security system design **COMMON AREAS**

## STATE-OF-THE-ART ACCESS CONTROL

- Equipment: Linear AE2000
- Residents have entry card for 11 doors and 7 gates
  - Access links to entry into 4 elevator doors
- Front door visitors can be viewed on surveillance cameras with CCTV
- 16 CCTV's – 2 of which are pan/tilt/zoom – blanket the property and connect to the internet
- 24 hour security monitoring
- 24 hour emergency service through a local central station

## FIRE

- Firelite 9600 fully addressable fire system
- 24 hour fire monitoring
- 24 hour emergency service through a local central station

## LIFESTYLE AMENITIES

- WiFi
- Music network by Russound. Equipment is R-Net which allows 6 different selections with individual volume settings for use in the conference room, library, exercise room, game room, pool, and party room.
- 3 LCDs in Exercise Room
- Audio-Visual equipment and screening set-up

## POWER RELIABILITY

- 350kW and 200kW Diesel fired generators for back-up power generation to elevators, common area lighting, and two circuits per unit (for refrigerator, lighting, receptacle and microwave)



State-of-the-art  
**ACCESS  
CONTROLLER**  
Linear AE2000

24 hour emergency service through a local central station



24 hour security and fire monitoring



Surveillance cameras with CCTV



WiFi network



Fully addressable fire system



3 LCDs in Fitness Center



Entry card for 11 doors and 7 gates



Access links to entry into 4 elevator doors



Audio-visual equipment and screening set-up

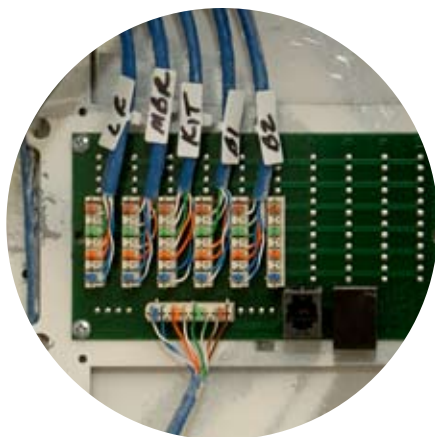


Music network by Russound for 6 unique locations and settings

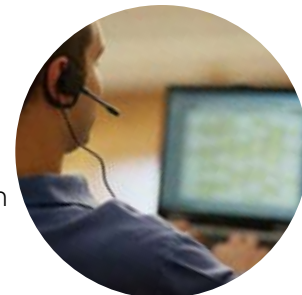


# special system design **INDIVIDUAL UNITS**

**TOTAL SECURITY AND FIRE SYSTEM EQUIPMENT INCLUDES TWO DOOR CONTACTS, MOTION DETECTORS, AND AN INTERIOR HORN.**



- 24-hour security and fire monitoring
- No keys! Access control via dual technology on a card (magnetic stripe and a proximity reader)
- Technology includes cable for high speed data and voice
- Control Panel: Vista 10 by Ademco
- Motion Detectors (2)
- Door Contacts (2)
- Interior Horn
- Each unit is cabled with a distribution panel for data and voice.



## **SECURITY MONITORING**

For the individual units and the common areas, John Hall Electric offers round the clock fire and security system monitoring. Through the use of sophisticated technology, we are able to identify **exactly** where a device is triggered, maximizing resident safety and building integrity.

JHE provides 24-hour Emergency Service through a local central station for any electrical-related issues.

*Clancy & Theys Construction Company has been in the construction business for over 50 years. We know that when John Hall Electric is a part of the team, we do not have to worry about their schedule or the quality of their work. Over the past 15 years, we have worked with many of the employees at John Hall and have been impressed with their consistency. John Hall Electric is to be commended for their ability to function as a team member and for their loyalty to the client. Offering mainly residential work to Clancy & Theys, John Hall Electric is now also providing commercial services.*

**THOMAS W. GLASGOW**  
**VIRGINIA DIVISION**

**CLANCY & THEYS**  
**CONSTRUCTION COMPANY**



**TRUST JOHN HALL ELECTRIC TO PROVIDE THE QUALITY SERVICE YOU DESERVE!**





Playing our part in environmental stewardship of this important wildlife reserve area, JHE installed special red lighting fixtures on the building's exterior as "sea turtle" friendly lighting.



We invite you to contact us to discuss this project and its technologies. Everyone at JHE looks forward to serving you.

**John E. Hall Electrical Contractor, Inc.**

757.465.1658 **ph** | 757.465.1295 **fax**

johnhall@JohnHallElectric.com | [www.JohnHallElectric.com](http://www.JohnHallElectric.com)

3303 Airline Blvd, Suite 1A | Portsmouth VA 23701